

antheia
Pimpri, Pune



Unbox the lifestyle you desire

Pune is a destination that is catching up fast with Mumbai. Needless to say it brings with it a premium lifestyle that compliments your tastes.. A home with the perfect balance of splendour, space and comfort. Where everything you desire is not too far from home. A home in the lap of nature, full of peace and tranquility.

Unbox the next level of living.



Pimpri - Chinchwad Smart City - A smarter life in the making.

Jog by the river side with your kids cycling by the banks. Stay connected to work and family with 24/7 Wi-Fi access. Reap the benefits of quality education and cutting-edge healthcare. Life in the Pimpri - Chinchwad Smart City is a success story in the making.

Sources:
<http://www.smartcitypimprichinchwad.in/>
<http://timesofindia.indiatimes.com/>

Unbox life at Antheia

Antheia is a residential project by Mahindra Lifespaces located in Pimpri-Chinchwad, a fast developing industrial & IT hub. Welcome to Antheia – the perfect antidote to today's hurried city life. Antheia is more than just an investment – you and your family will love calling it your home.

Homes at Antheia are well designed, spacious and offer complete privacy.

1 BHK

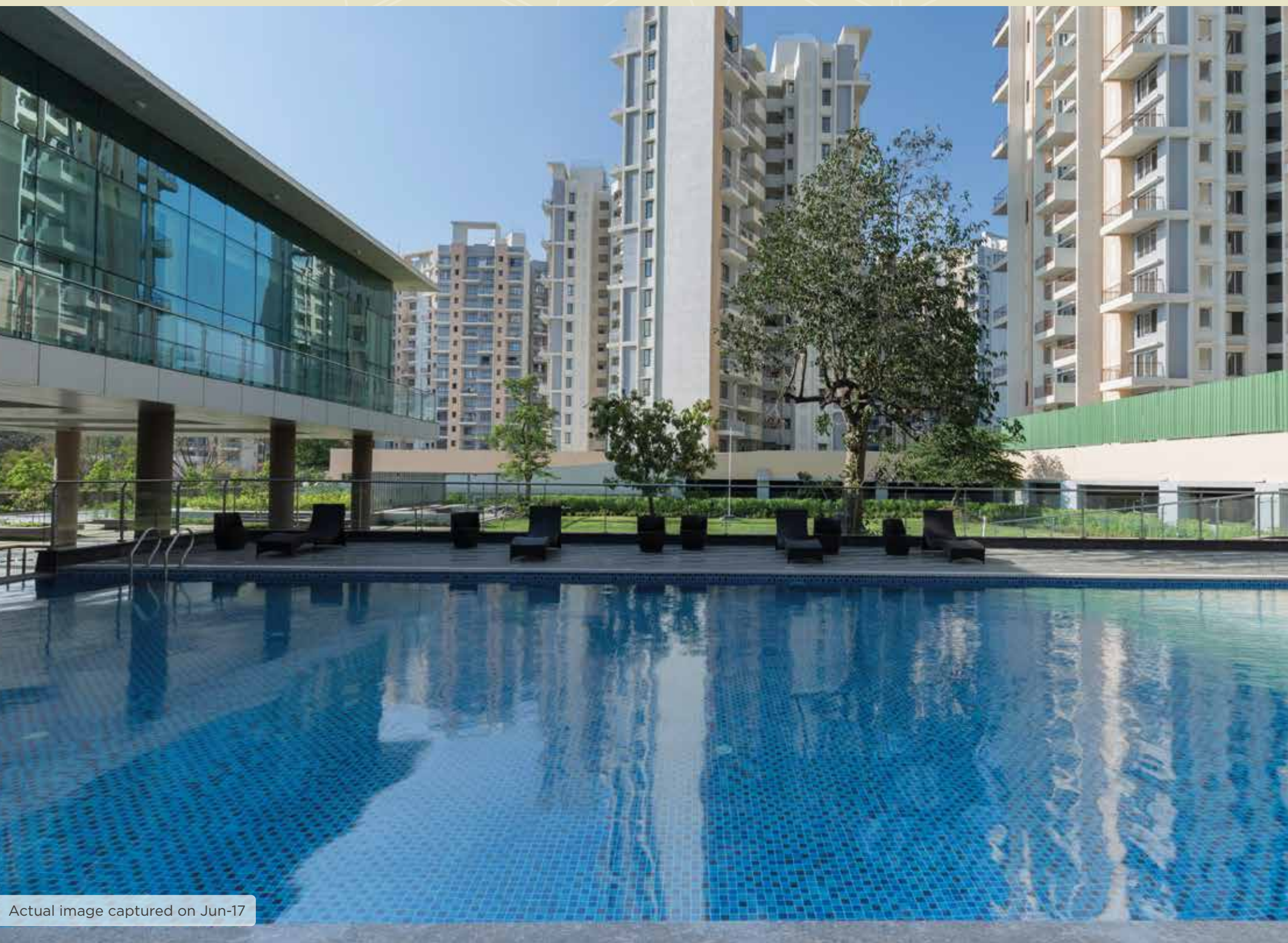
2 BHK

2.5 BHK

3 BHK



Actual image captured on Jun-17



Actual image captured on Jun-17

Unbox fun

At Antheia, you come home to open spaces and lots of fun every day. You have access to exciting amenities and recreational facilities. Relax and watch the strains of city life dissolve at Antheia's refreshing swimming pool. We have a toddlers' pool, too, to ensure your little ones don't miss out on the fun.

Unbox laughter

We know how important space is, especially for children. They need to run around, shout, laugh, and explore. At Antheia, you can let your kids be kids. Drop them off at the play area or the clubhouse filled with games and other fun activities just for them. Watch them turn the green, sloping lawns into their special playground and as their laughter fills the air, you'll know you're home.



Actual image captured on Jun-17



Actual image captured on Jun-17



Actual image captured on Jun-17



Image for representative purpose only



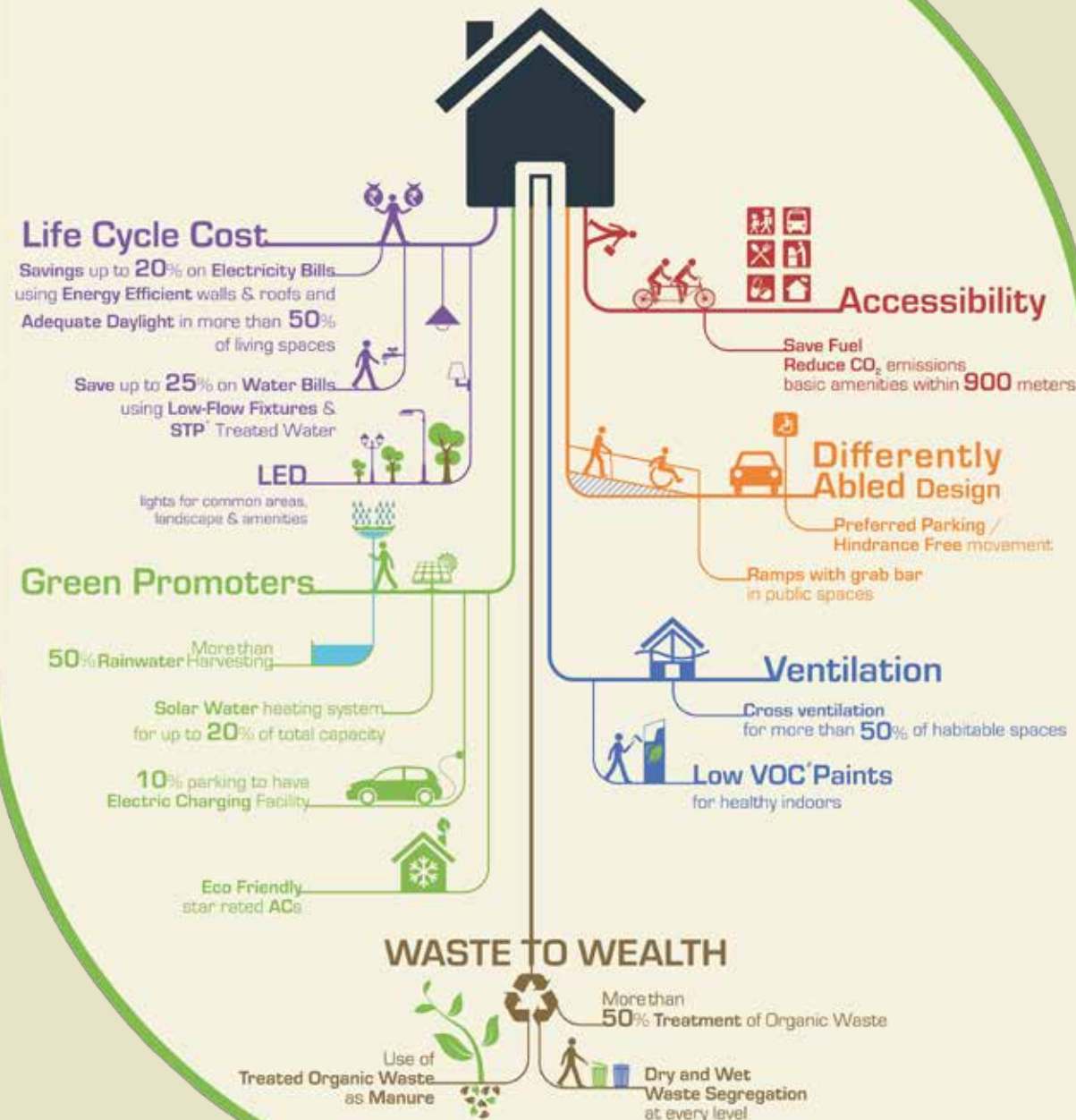
Actual image captured on Jun-17

Unbox health

It's hard to commit to fitness today. After a hectic day, there's hardly any motivation left to drive to the gym and workout. But at Antheia, you don't have to. You have access to a squash court, a tennis court and a fantastic fitness centre with the great equipment, everything you need to get fit and stay fit. The lush landscape and secluded gardens help you leave the city behind. Take long walks with your family in the garden, rest awhile under a tree and celebrate space and serenity every day.

Unbox green and healthy living

Actual results could differ from those expressed or implied.



These are anticipated results based on IGBC Green Homes Rating System (V1, 2009)
*Sewage Treatment Plant | # Volatile Organic Compound

Mahindra Lifespaces believes in sustainable urbanisation that makes their project greener and healthier. So choosing an Antheia home is not only the right choice you're making for yourself but also for the environment.

Pune presence – our story so far



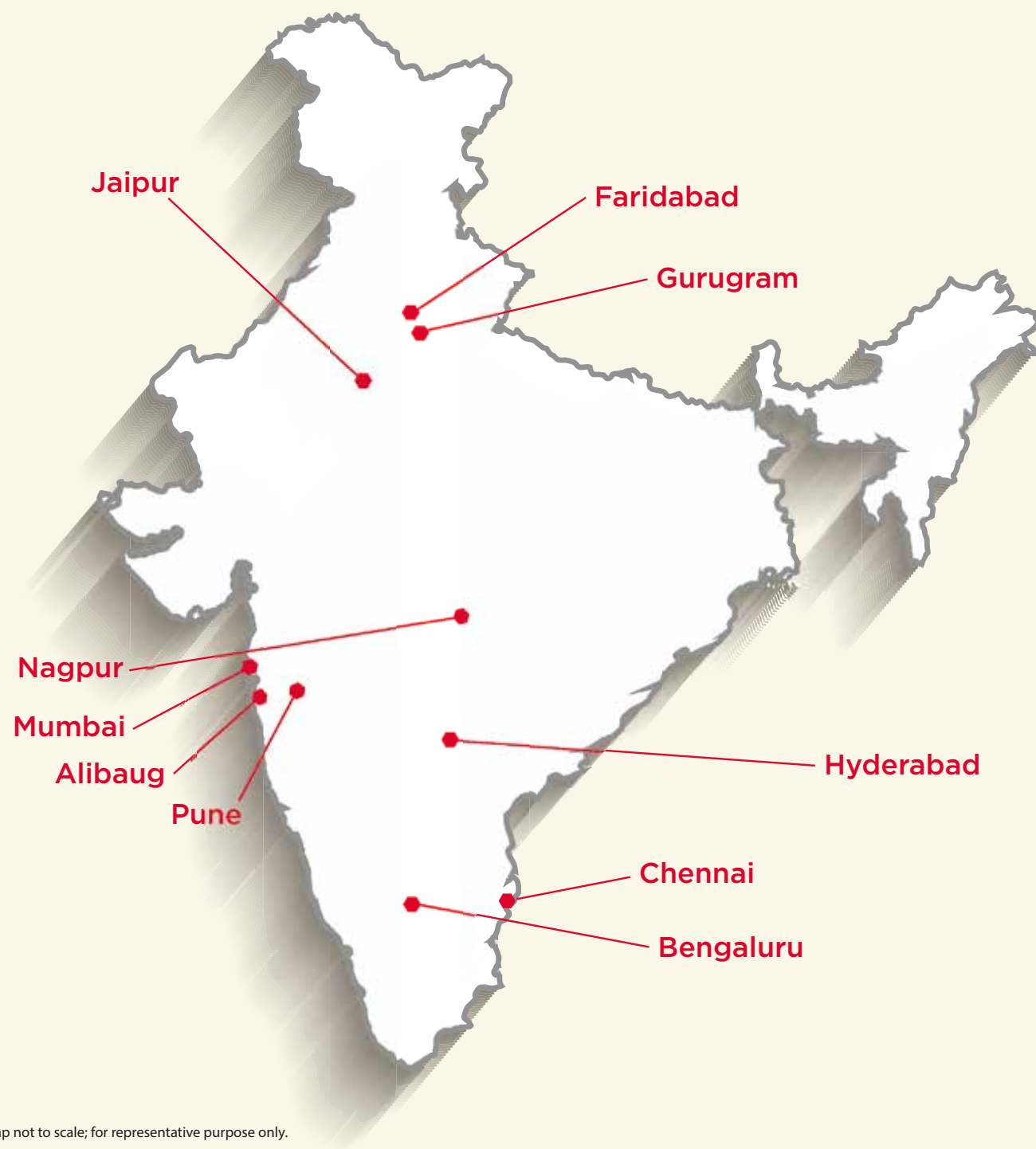
Mahindra Royale - 2011

Mahindra Royale has set the benchmark in elegant and stylish living in Pimpri-Chinchwad. Spread over 9 acres with 12 apartment buildings, Royale boasts unmatched amenities set in smart, open and eco-friendly spaces.



The Woods - 2007

Located at Wakad, Pune, and spread over 12 acres, the project has premium bungalows, garden and terrace duplex houses along with luxurious apartments, all tucked away in lush greenery.



Map not to scale; for representative purpose only.

Mahindra Lifespaces A name you can trust

Mahindra Lifespace Developers Ltd., the real estate and infrastructure development business of the Mahindra Group, is a leader and pioneer in sustainable urban development. Our best work include residential and integrated large format developments across multiple city-clusters like Mumbai Metropolitan Region (Mumbai, Thane, Palghar, Alibaug and Boisar), Pune, Nagpur, Ahmedabad, Nashik, the National Capital Region (New Delhi, Gurgaon and Faridabad), Jaipur, Hyderabad, Bengaluru and Chennai. As of June 30th, 2017, the Company's residential & commercial development footprint includes 1.31 million sq.m. (14.06 million sq.ft.) of completed projects and 0.81 million sq.m. (8.7 million sq.ft.) of ongoing and forthcoming projects.

The Company is developing two large format integrated business cities, under the 'Mahindra World City' brand, in Chennai and Jaipur; built on the philosophy of 'Livelihood-Living-Life', these developments span over 4000 acres, house over 130 global and Indian companies and serves to drive economic growth and community development. In addition, Mahindra Lifespaces enables access to quality housing at affordable prices via its brand 'Happinest'.

Mahindra Lifespaces is the first Indian real estate company to have voluntarily released its GRI compliant report based on the GRI (Global Reporting Initiative) framework. In 2016, Mahindra Lifespaces has been ranked 28th amongst the 'Top 100 companies in Asia' in the 2016 Channel News Asia Sustainability ranking.





Sales office:

Mahindra Lifespace Developers Ltd., CTS No. 6017, Nehru Nagar Road, Near Dr. Beck's, Pimpri 411 018, Pune.
Tel: 1800-267-1010

Corporate office:

Mahindra Towers, 5th Floor, Dr. G M Bhosale Marg, P K Kurne Chowk, Worli, Mumbai 400 018.
Tel: 022 - 6747 8600, 6747 8601 | Fax: 022-2497 5084 | Website: www.mahindralifespaces.com | Email: homes@mahindra.com

MahaRERA Registration No. : A3 - P52100000171 | A4 - P52100000210 | B4 - P52100000281 | C1 - P52100000217
C2 - P52100000249 | D4 - P52100000416 available at [website:http://maharera.mahaonline.gov.in](http://maharera.mahaonline.gov.in).

Disclaimer: This communication is purely conceptual and not a legal offering. The information contained in this communication is only indicative of the kind of development that is proposed and is subject to change. All images are artistic conceptualization for illustration only and do not purport to exactly replicate the products. Any furniture & fixtures shown here are not part of the offering & are purely for showcasing possibilities. Mahindra Lifespace Developers Ltd. reserves the right to make changes or alterations.